

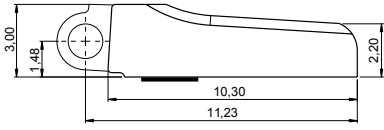
PATENTED

OCTOPUS 3.8 · 5 joints

High Performance Spring Hinges and Wirecores for Metal, Acetate and Combination Frames

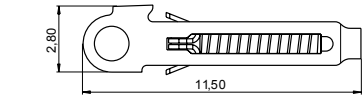
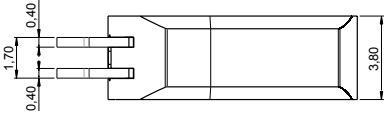


HINGES



BOX 03SC62025000

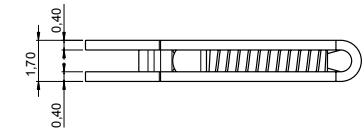
Material: **Nickel silver**
WITH SOLDERING PATCH



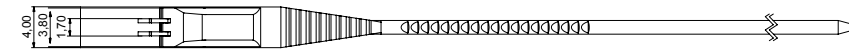
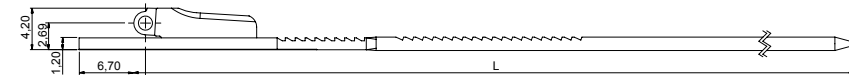
SOFT TROLLEY 07CR21602000

HARD TROLLEY 07CRB0251A1BYX

Material: **Stainless steel**



WIRECORES



WIRECORE

L 130	03WFC7792A130BNX
L 135	03WFC7792A235BNX

Material: **Nickel silver**
Trolley: **Soft Trolley**

Note: **Hard Trolley** available on request



BARRELING CAP 09CA62233000

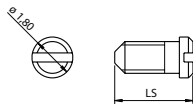
Material: **Plastic**

SCREWS

MINUS SCREW M1.40

LS 4.55	07V118045501
---------	--------------

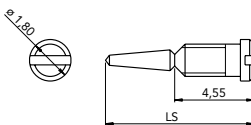
Material: **Stainless steel**



SELF ALIGNING SCREW M1.40

LS 7.55	07V118075500
---------	--------------

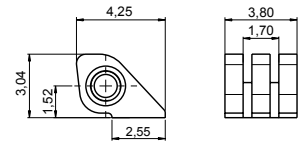
Material: **Stainless steel**



ON REQUEST

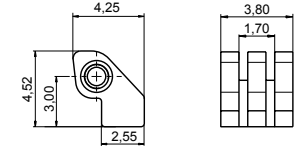
90° SOLDERING HINGE FOR COMBINATION FRAMES

Material: **Nickel silver**



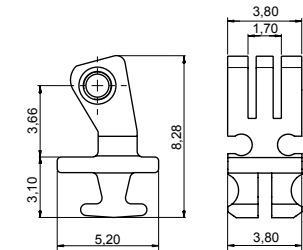
SOLDERING HINGE 03FR38220000

Material: **Nickel silver**



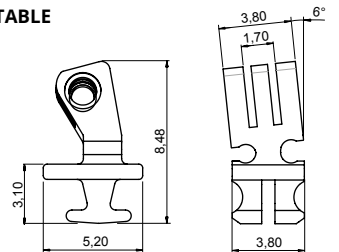
STEP HINGE 03FR38221000

Material: **Nickel silver**



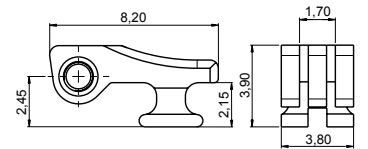
90° INSERT HINGE 03FRC5915A2BN0

Material: **Nickel silver**
ADJUSTABLE



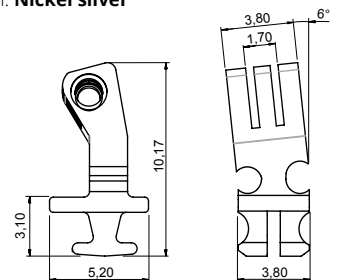
90° INSERT HINGE 03FRC5916A2BN0

Material: **Nickel silver**
ADJUSTABLE 6° SLANTED ANGLE



180° INSERT HINGE 03FR38223000

Material: **Nickel silver**



90° INSERT HINGE 03FRC5910A2BN0

Material: **Nickel silver**
HIGH VERSION ADJUSTABLE 6° SLANTED ANGLE