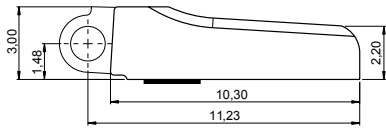


**PATENTED**

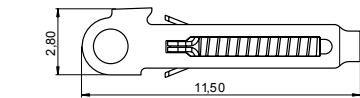
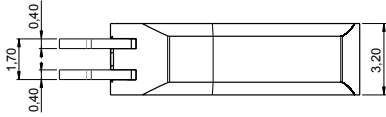
# OCTOPUS 3.2 · 5 joints

High Performance Spring Hinges and Wirecores for Metal, Acetate and Combination Frames



**BOX** 03SC62024000

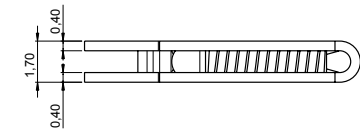
Material: **Nickel silver**  
**WITH SOLDERING PATCH**



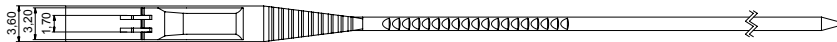
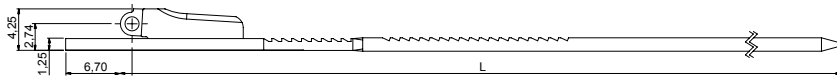
**SOFT TROLLEY** 07CR21602000

**HARD TROLLEY** 07CRB0251A1BYX

Material: **Stainless steel**



**WIRECORES**



**WIRECORE**

L 130	03WFC7794A130BNX
L 135	03WFC7794A235BNX

Material: **Nickel silver**  
Trolley: **Soft Trolley**  
Note: **Hard Trolley** available on request



**BARRELING CAP** 09CA62232000

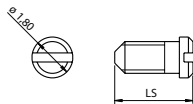
Material: **Plastic**

**SCREWS**

**MINUS SCREW M1.40**

LS 3.95	07VI18039502
---------	--------------

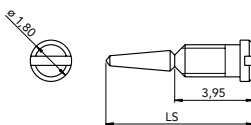
Material: **Stainless steel**



**SELF ALIGNING SCREW M1.40**

LS 6.95	07VI18069500
---------	--------------

Material: **Stainless steel**



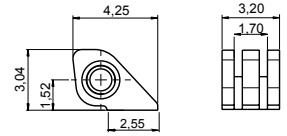
**ON REQUEST**

**90° SOLDERING HINGE FOR COMBINATION FRAMES**

Material: **Nickel silver**

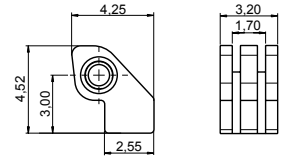


**HINGES**



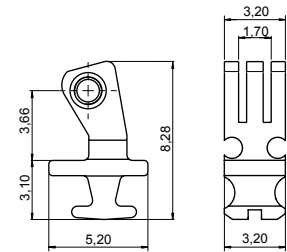
**SOLDERING HINGE** 03FR32220000

Material: **Nickel silver**



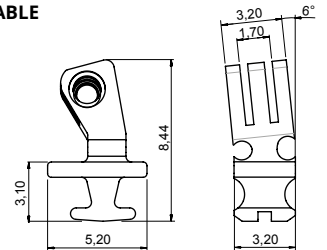
**STEP HINGE** 03FR32221000

Material: **Nickel silver**



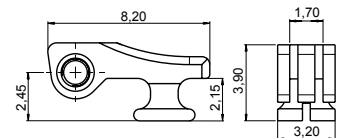
**90° INSERT HINGE** 03FRC5913A2BNO

Material: **Nickel silver**  
**ADJUSTABLE**



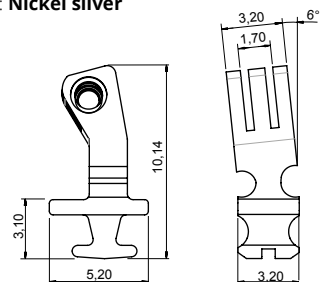
**90° INSERT HINGE** 03FRC5914A2BNO

Material: **Nickel silver**  
**ADJUSTABLE 6° SLANTED ANGLE**



**180° INSERT HINGE** 03FR32223000

Material: **Nickel silver**



**90° INSERT HINGE** 03FRC5908A2BNO

Material: **Nickel silver**  
**HIGH VERSION ADJUSTABLE 6° SLANTED ANGLE**