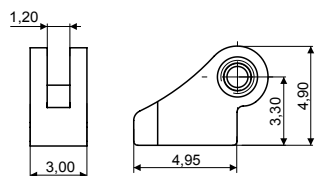


BH334 (3.0)

Value Regular Hinge and Wirecore
for Acetate and Combination Frames

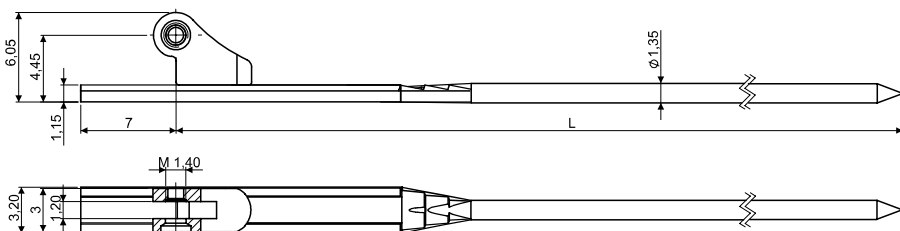


SOLDERING FEMALE

CODE 03FEC7655A1BY0

Material: **Nickel silver**

WIRECORES



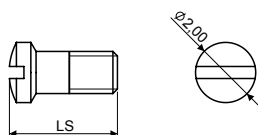
WIRECORE

L 128 03WRC7674A128BN0

L 133 03WRC7674A233BN0

Material: **Nickel silver**

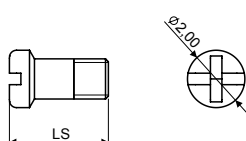
SCREWS



MINUS SCREW M1.40

LS	CODE
3.60	07VI20036000

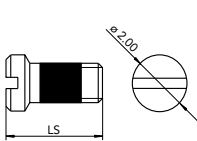
Material: **Stainless steel**



PLUS MINUS SCREW M1.40

LS	CODE
3.45	07VIC7365A1BYX

Material: **Stainless steel**

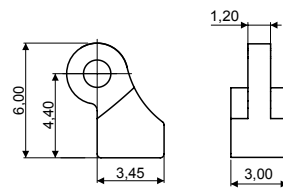


VIT SCREW M1.40

LS	CODE
3.50	07VIC7054A1BYX

Material: **Stainless steel**
Visottica Injection Technology

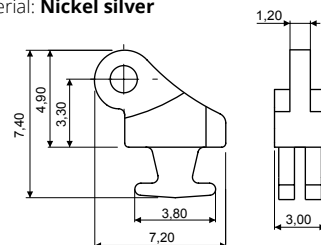
HINGES



STEP HINGE

03MAC7657A1BYX

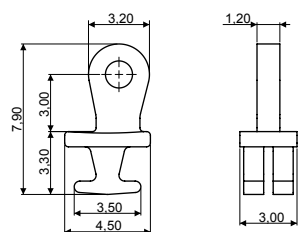
Material: **Nickel silver**



180° INSERT HINGE

03MAC8836A2BNX

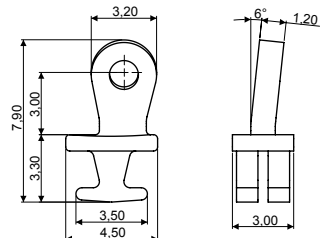
Material: **Nickel silver**



90° INSERT HINGE

03MAC7838A2BNX

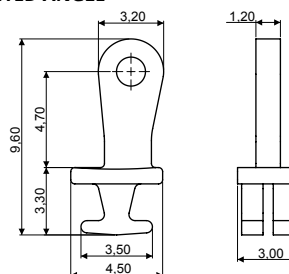
Material: **Nickel silver**



90° INSERT HINGE

03MAC7840A1BN0

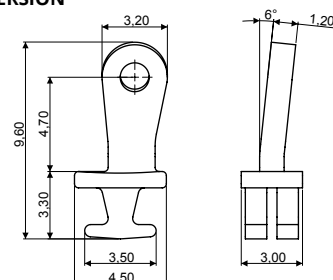
Material: **Nickel silver**
6° SLANTED ANGLE



90° INSERT HINGE

03MAC7659A2BNX

Material: **Nickel silver**
HIGH VERSION



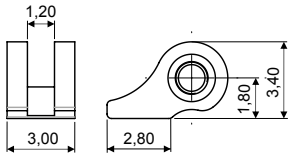
90° INSERT HINGE

03MAC7660A2BN0

Material: **Nickel silver**
HIGH VERSION 6° SLANTED ANGLE

BH334 (3.0)

Value Regular Hinge and Wirecore
for Injection and Combination Frames

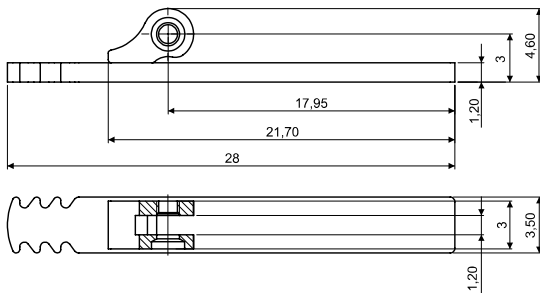


SOLDERING FEMALE

CODE 03FEC7430A1BY0

Material: **Nickel silver**

WIRECORES

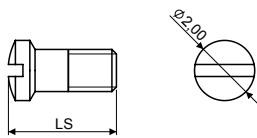


SHORT INJECTION WIRECORE SMALL STEP

CODE 03WRC7696A1A1BN0

Material: **Nickel silver**

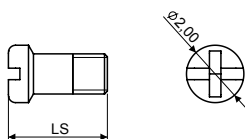
SCREWS



MINUS SCREW M1.40

LS	CODE
3.60	07VI20036000

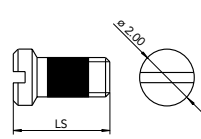
Material: **Stainless steel**



PLUS MINUS SCREW M1.40

LS	CODE
3.45	07VIC7365A1BYX

Material: **Stainless steel**

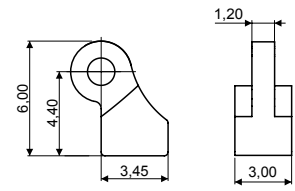


VIT SCREW M1.40

LS	CODE
3.50	07VIC7054A1BYX

Material: **Stainless steel**
Visottica Injection Technology

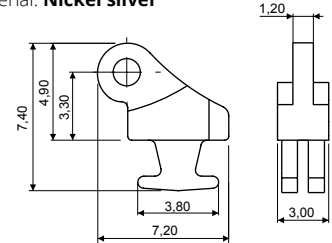
HINGES



STEP HINGE

03MAC7657A1BYX

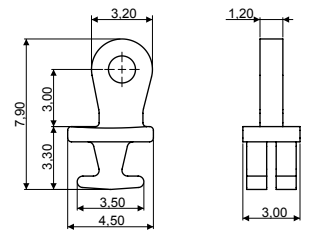
Material: **Nickel silver**



180° INSERT HINGE

03MAC8836A2BNX

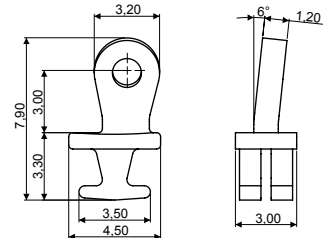
Material: **Nickel silver**



90° INSERT HINGE

03MAC7838A2BNX

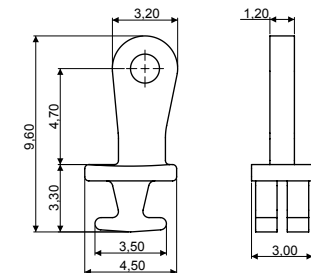
Material: **Nickel silver**



90° INSERT HINGE

03MAC7840A1BN0

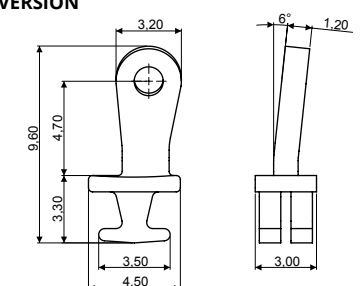
Material: **Nickel silver**
6° SLANTED ANGLE



90° INSERT HINGE

03MAC7659A2BNX

Material: **Nickel silver**
HIGH VERSION



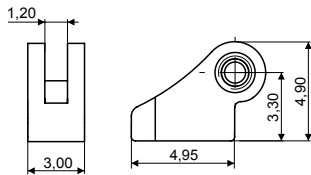
90° INSERT HINGE

03MAC7660A2BN0

Material: **Nickel silver**
HIGH VERSION 6° SLANTED ANGLE

BH334 (3.0)

Value Regular Hinge and Wirecore
for **Injection and Combination Frames**

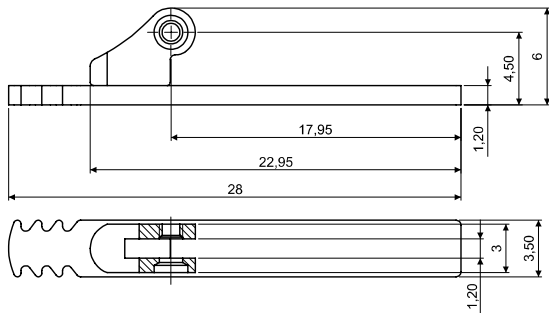


SOLDERING FEMALE

CODE 03FEC7655A1BY0

Material: **Nickel silver**

WIRECORES

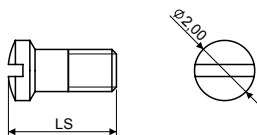


SHORT INJECTION WIRECORE BIG STEP

CODE 03WRC7694A1A1BN0

Material: **Nickel silver**

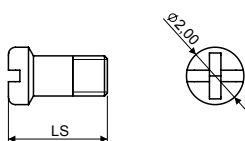
SCREWS



MINUS SCREW M1.40

LS	CODE
3.60	07VI20036000

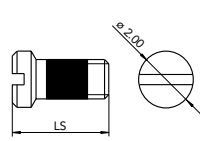
Material: **Stainless steel**



PLUS MINUS SCREW M1.40

LS	CODE
3.45	07VIC7365A1BYX

Material: **Stainless steel**

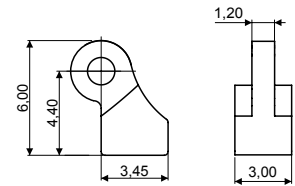


VIT SCREW M1.40

LS	CODE
3.50	07VIC7054A1BYX

Material: **Stainless steel**
Visottica Injection Technology

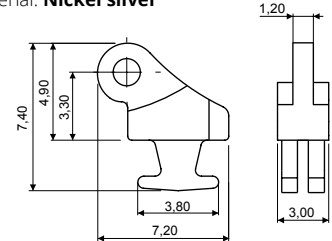
HINGES



STEP HINGE

03MAC7657A1BYX

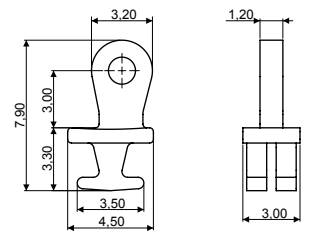
Material: **Nickel silver**



180° INSERT HINGE

03MAC8836A2BNX

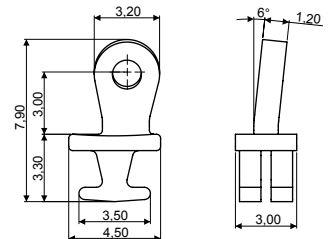
Material: **Nickel silver**



90° INSERT HINGE

03MAC7838A2BNX

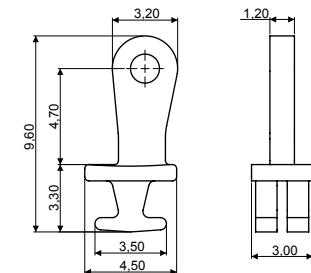
Material: **Nickel silver**



90° INSERT HINGE

03MAC7840A1BN0

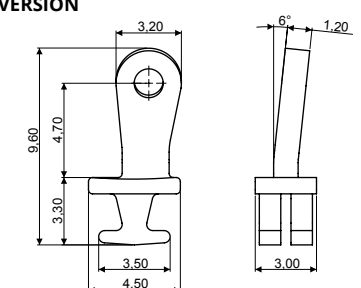
Material: **Nickel silver**
6° SLANTED ANGLE



90° INSERT HINGE

03MAC7659A2BNX

Material: **Nickel silver**
HIGH VERSION



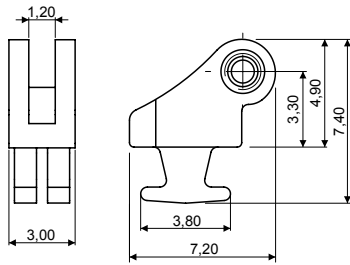
90° INSERT HINGE

03MAC7660A2BN0

Material: **Nickel silver**
HIGH VERSION 6° SLANTED ANGLE

BH334 (3.0)

Value Regular Hinge and Wirecore
for **Injection and Combination Frames**

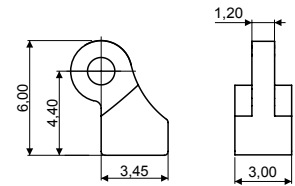


INSERT FEMALE

CODE 03FEC8835A2BNO

Material: **Nickel silver**

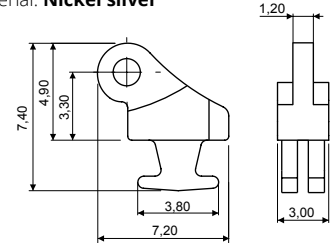
HINGES



STEP HINGE

03MAC7657A1BYX

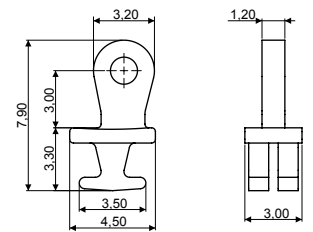
Material: **Nickel silver**



180° INSERT HINGE

03MAC8836A2BNX

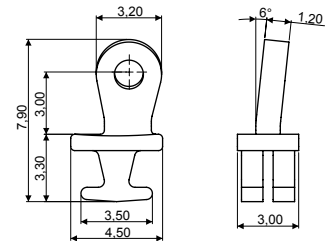
Material: **Nickel silver**



90° INSERT HINGE

03MAC7838A2BNX

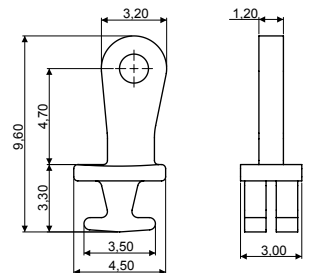
Material: **Nickel silver**



90° INSERT HINGE

03MAC7840A1BNO

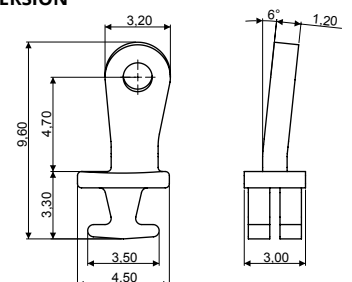
Material: **Nickel silver**
6° SLANTED ANGLE



90° INSERT HINGE

03MAC7659A2BNX

Material: **Nickel silver**
HIGH VERSION

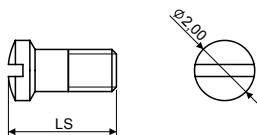


90° INSERT HINGE

03MAC7660A2BNO

Material: **Nickel silver**
HIGH VERSION 6° SLANTED ANGLE

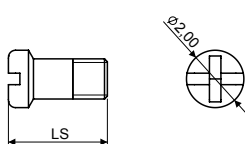
SCREWS



MINUS SCREW M1.40

LS	CODE
3.60	07VI20036000

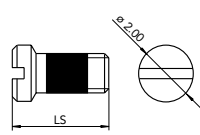
Material: **Stainless steel**



PLUS MINUS SCREW M1.40

LS	CODE
3.45	07VIC7365A1BYX

Material: **Stainless steel**



VIT SCREW M1.40

LS	CODE
3.50	07VIC7054A1BYX

Material: **Stainless steel**
Visottica Injection Technology