



OCTOPUS

Maximum resistance
in a minimum dimension



VISOTTICA
GROUP

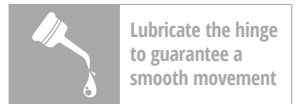
OCTOPUS

Maximum resistance in a minimum dimension

Versatile spring hinge for metal, acetate and combination frames

PATENTED

COVERED BY INTERNATIONAL PATENT



FEATURES

STABLE PERFORMANCE

after frame adjustment

SELF LOCK TROLLEY

easy to insert

EASY TO SOLDER

on temple or wirecore

2 JOINTS

stainless steel trolley

ANTI ROCKING

high performance

SOFT AND HARD SPRING

for different applications

PERFORMANCES

WEAR RESISTANCE

over 50,000 open/close cycles

ROCKING ANGLE

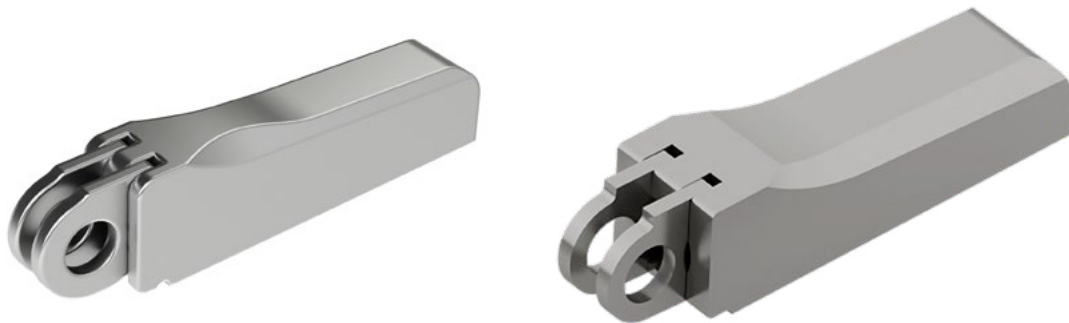
$\pm 0.5^\circ$

PULLING RESISTANCE

> 300 N

BENDING RESISTANCE

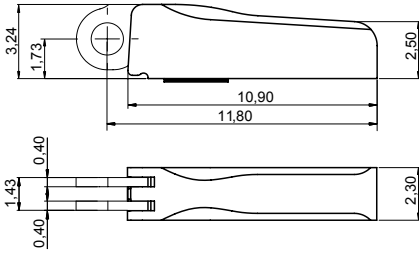
min. 100 complete cycles $\pm 15^\circ$
min. 10 complete cycles $\pm 30^\circ$



PATENTED

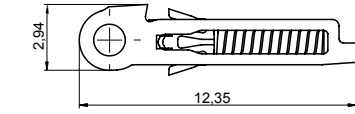
OCTOPUS 2.3 · 5 joints

High Performance Spring Hinges and Wirecores for Metal, Acetate and Combination Frames



BOX 03SCCB032A1BYX

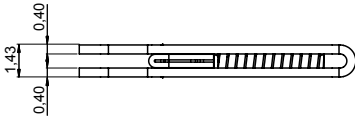
Material: **Nickel silver**
WITH SOLDERING PATCH



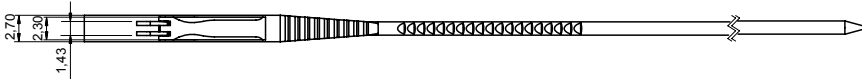
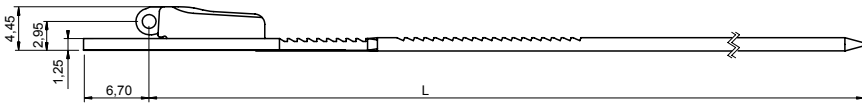
SOFT TROLLEY 07CRC9852A1BYX

HARD TROLLEY 07CRC9851A1BYX

Material: **Stainless steel**



WIRECORES



WIRECORE

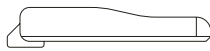
L 130 03WFCB069A130BNX

L 135 03WFCB069A235BNX

Material: **Nickel silver**

Trolley: **Soft Trolley**

Note: **Hard Trolley** available on request



BARRELING CAP 60CACB104A1WYX

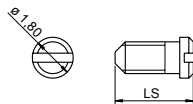
Material: **Plastic**

SCREWS

MINUS SCREW M1.40

LS 3.25 07VIC9500A1BYX

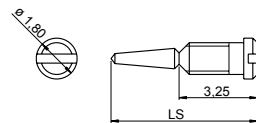
Material: **Stainless steel**



SELF ALIGNING SCREW M1.40

LS 6.25 07VIC9499A1BYX

Material: **Stainless steel**



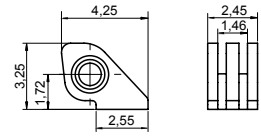
ON REQUEST

90° SOLDERING HINGE FOR COMBINATION FRAMES

Material: **Nickel silver**

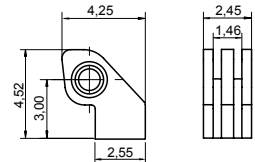


HINGES



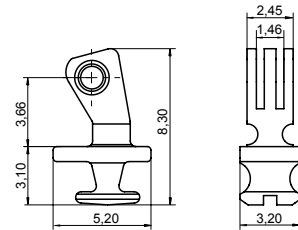
SOLDERING HINGE 03FRC9415A1BY0

Material: **Nickel silver**



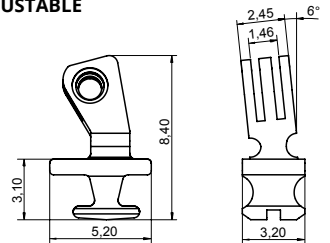
STEP HINGE 03FRC9416A1BY0

Material: **Nickel silver**



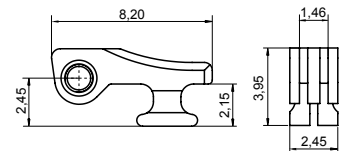
90° INSERT HINGE 03FRC9418A2BN0

Material: **Nickel silver**
ADJUSTABLE



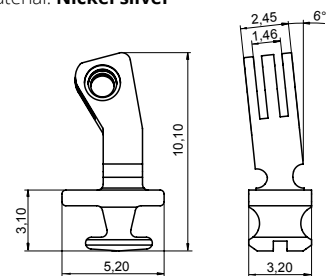
90° INSERT HINGE 03FRC9419A2BN0

Material: **Nickel silver**
ADJUSTABLE 6° SLANTED ANGLE



180° INSERT HINGE 03FRC9417A2BN0

Material: **Nickel silver**



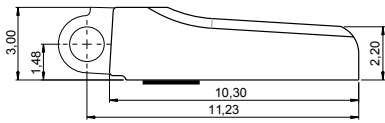
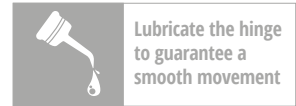
90° INSERT HINGE 03FRC9421A2BN0

Material: **Nickel silver**
HIGH VERSION ADJUSTABLE 6° SLANTED ANGLE

PATENTED

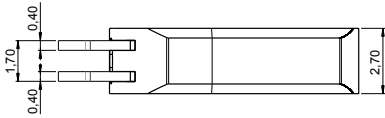
OCTOPUS 2.7 · 5 joints

High Performance Spring Hinges and Wirecores for Metal, Acetate and Combination Frames



BOX 03SC62023000

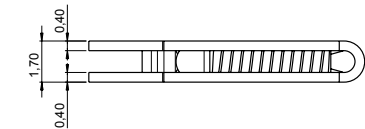
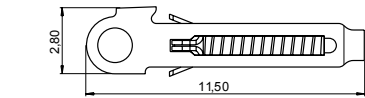
Material: **Nickel silver WITH SOLDERING PATCH**



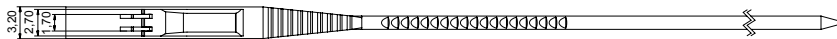
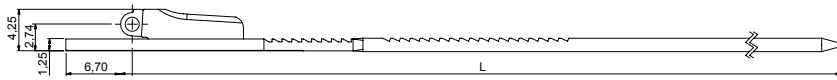
SOFT TROLLEY 07CR21602000

HARD TROLLEY 07CRB0251A1BYX

Material: **Stainless steel**



WIRECORES



WIRECORE

L 130	03WFC7796A130BNX
L 135	03WFC7796A235BNX

Material: **Nickel silver**
Trolley: **Soft Trolley**

Note: **Hard Trolley** available on request



BARRELING CAP 09CA62231000

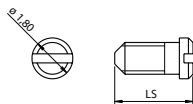
Material: **Plastic**

SCREWS

MINUS SCREW M1.40

LS 3.45 | 07V118034502

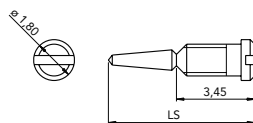
Material: **Stainless steel**



SELF ALIGNING SCREW M1.40

LS 6.45 | 07V118064500

Material: **Stainless steel**



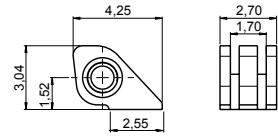
ON REQUEST

90° SOLDERING HINGE FOR COMBINATION FRAMES

Material: **Nickel silver**

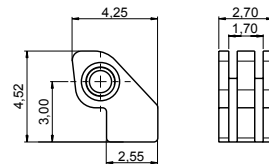


HINGES



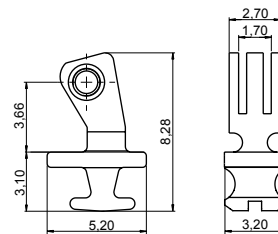
SOLDERING HINGE 03FR27220000

Material: **Nickel silver**



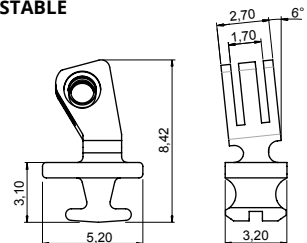
STEP HINGE 03FR27221000

Material: **Nickel silver**



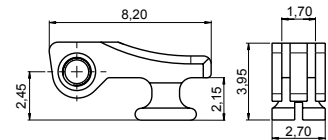
90° INSERT HINGE 03FRC5911A2BN0

Material: **Nickel silver ADJUSTABLE**



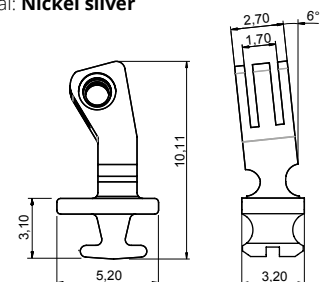
90° INSERT HINGE 03FRC5912A2BN0

Material: **Nickel silver ADJUSTABLE 6° SLANTED ANGLE**



180° INSERT HINGE 03FR27223000

Material: **Nickel silver**



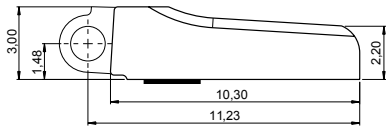
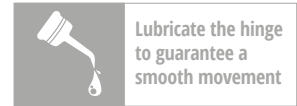
90° INSERT HINGE 03FRC5906A2BN0

Material: **Nickel silver HIGH VERSION ADJUSTABLE 6° SLANTED ANGLE**

PATENTED

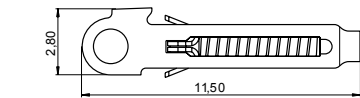
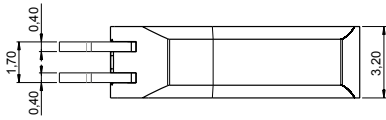
OCTOPUS 3.2 · 5 joints

High Performance Spring Hinges and Wirecores for Metal, Acetate and Combination Frames



BOX 03SC62024000

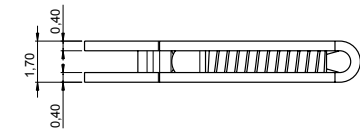
Material: **Nickel silver**
WITH SOLDERING PATCH



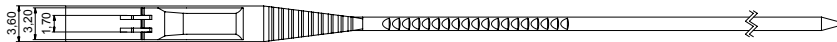
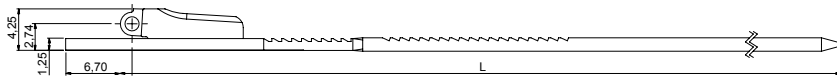
SOFT TROLLEY 07CR21602000

HARD TROLLEY 07CRB0251A1BYX

Material: **Stainless steel**



WIRECORES



WIRECORE

L 130	03WFC7794A130BNX
L 135	03WFC7794A235BNX

Material: **Nickel silver**
Trolley: **Soft Trolley**

Note: **Hard Trolley** available on request



BARRELING CAP 09CA62232000

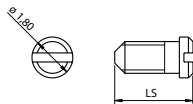
Material: **Plastic**

SCREWS

MINUS SCREW M1.40

LS 3.95	07VI18039502
---------	--------------

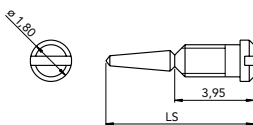
Material: **Stainless steel**



SELF ALIGNING SCREW M1.40

LS 6.95	07VI18069500
---------	--------------

Material: **Stainless steel**



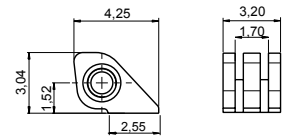
ON REQUEST

90° SOLDERING HINGE FOR COMBINATION FRAMES

Material: **Nickel silver**

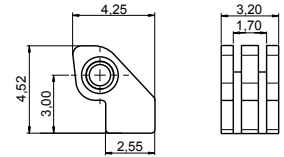


HINGES



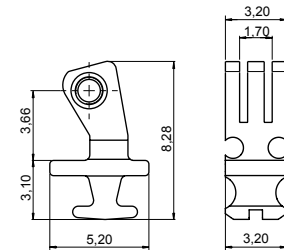
SOLDERING HINGE 03FR32220000

Material: **Nickel silver**



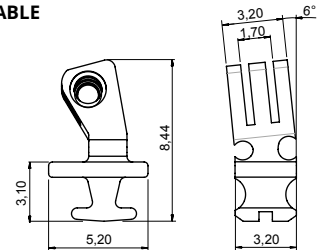
STEP HINGE 03FR32221000

Material: **Nickel silver**



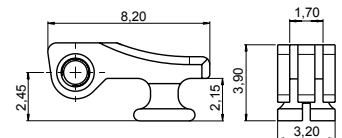
90° INSERT HINGE 03FRC5913A2BN0

Material: **Nickel silver**
ADJUSTABLE



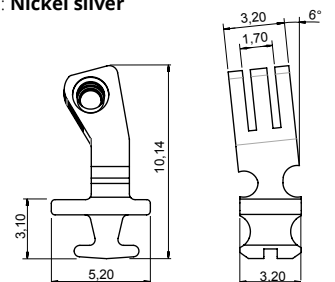
90° INSERT HINGE 03FRC5914A2BN0

Material: **Nickel silver**
ADJUSTABLE 6° SLANTED ANGLE



180° INSERT HINGE 03FR32223000

Material: **Nickel silver**



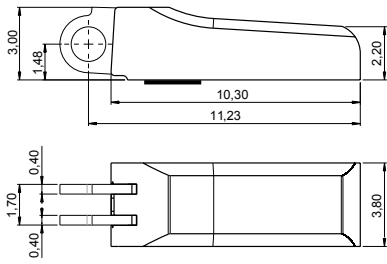
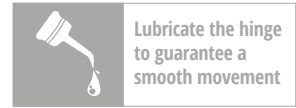
90° INSERT HINGE 03FRC5908A2BN0

Material: **Nickel silver**
HIGH VERSION ADJUSTABLE 6° SLANTED ANGLE

PATENTED

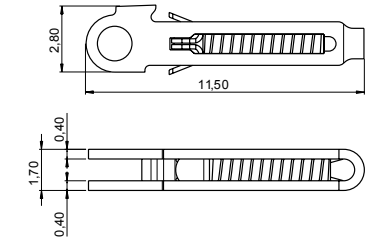
OCTOPUS 3.8 · 5 joints

High Performance Spring Hinges and Wirecores for Metal, Acetate and Combination Frames



BOX 03SC62025000

Material: **Nickel silver**
WITH SOLDERING PATCH

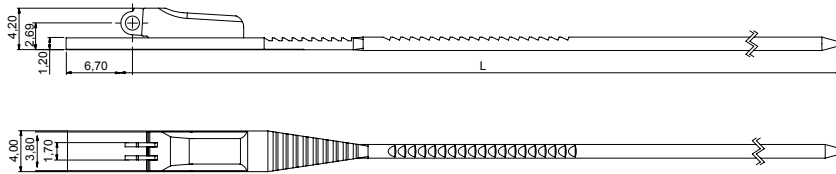


SOFT TROLLEY 07CR21602000

HARD TROLLEY 07CRB0251A1BYX

Material: **Stainless steel**

WIRECORES



WIRECORE

L 130	03WFC7792A130BNX
L 135	03WFC7792A235BNX

Material: **Nickel silver**
Trolley: **Soft Trolley**

Note: **Hard Trolley** available on request



BARRELING CAP 09CA62233000

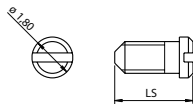
Material: **Plastic**

SCREWS

MINUS SCREW M1.40

LS 4.55	07V118045501
---------	--------------

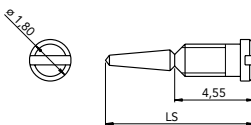
Material: **Stainless steel**



SELF ALIGNING SCREW M1.40

LS 7.55	07V118075500
---------	--------------

Material: **Stainless steel**



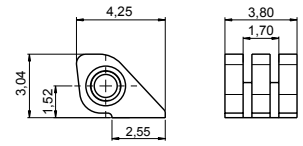
ON REQUEST

90° SOLDERING HINGE FOR COMBINATION FRAMES

Material: **Nickel silver**

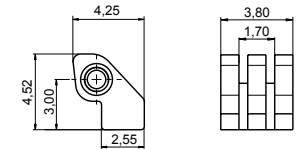


HINGES



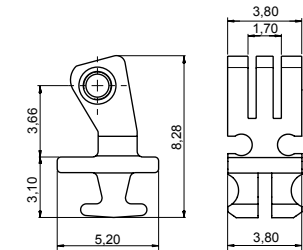
SOLDERING HINGE 03FR38220000

Material: **Nickel silver**



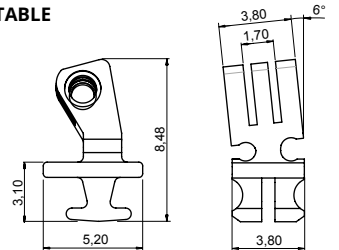
STEP HINGE 03FR38221000

Material: **Nickel silver**



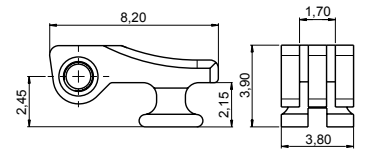
90° INSERT HINGE 03FRC5915A2BN0

Material: **Nickel silver**
ADJUSTABLE



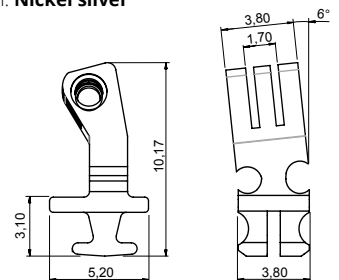
90° INSERT HINGE 03FRC5916A2BN0

Material: **Nickel silver**
ADJUSTABLE 6° SLANTED ANGLE



180° INSERT HINGE 03FR38223000

Material: **Nickel silver**



90° INSERT HINGE 03FRC5910A2BN0

Material: **Nickel silver**
HIGH VERSION ADJUSTABLE 6° SLANTED ANGLE

sales@visotticagroup.com



Visottica Industrie S.p.a.

Via Vecchia Trevigiana, 11
31058 Susegana
(Treviso), Italy
Tel +39 0438 6551
Fax +39 0438 450 855
sales@visotticagroup.com

O'Reilly Industrial Ltd.

Rm 302, Shui Hing Centre,
13 Sheung Yuet Road,
Kowloon Bay, Kowloon, Hong Kong
Tel +852 2796 6010
Fax +852 2796 4631
sales@visotticagroup.com

COMOTEC Optical Products (Dongguan) Ltd.

No. 23, Weijian Road,
ChaShan Town, Dongguan City
Guangdong Province, China 523380
Tel +86 769 8233 9955
Fax +86 769 8233 9977
sales@visotticagroup.com

Ookii S.r.l.

Via Industrie, 3 Rasai
32030 Seren del Grappa
(Belluno), Italy
Tel +39 0439 447 08
Fax +39 0439 448 038
sales@visotticagroup.com

Matrix S.r.l.

Via Industrie, 13 Rasai
32030 Seren del Grappa
(Belluno), Italy
Tel +39 0439 448 388
Fax +39 0439 448 217
sales@visotticagroup.com

Eurodecori S.r.l.

Zona Artigianale 11
32038 Quero Vas
(Belluno), Italy
Tel +39 0439 787 788
sales@visotticagroup.com